

頭頸部TNM分類研究 唾液腺関係資料

(1958年～1997年症例のTNM分類および予後)

日本TNM分類委員会

(The Japanese Joint Committee TNM Classification)

頭頸部小委員会唾液腺部門

(The Salivary Gland Division of the Head and Neck Subcommittee)

事務局 千葉大学医学部耳鼻咽喉科

Tel 043-226-2137

Fax 043-227-3442

1999年10月発行

目 次

耳下腺·····	4
顎下腺·····	7
舌下腺·····	10
小唾液腺·····	13
追加·····	16

症例登録施設名

耳鼻咽喉科

愛知医大
愛媛大
旭川医大
杏林大
横浜市立大
岡山大
関西医大
岩手医大
岐阜大
久留米大
宮崎医大
京都大
京都府立医大
近畿大
金沢医大
金沢大
九州大
熊本大
群馬大
慶応大
広島大
弘前大
香川医大
高知医大
佐賀医大
埼玉医大
埼玉医大総合医療
三重大
山形大
山口大

山梨医大
産業医大
慈恵医大
慈恵医大柏
滋賀医大
自治医大佐野厚生
自治医大
鹿児島大
秋田大
順天堂大浦安
順天堂大
昭和大
昭和大藤が丘
信州大
新潟大
神戸大
聖マリアンナ医大
千葉大
川崎医大
大阪医大
大阪市大
大阪大
大分医大
筑波大
長崎大
鳥取大
帝京大溝口
帝京大市原
島根医大
東海大

東京医科歯科大
東京医大
東京女子医大
東京大
東京大分院
東邦大大橋
東邦大大森
東北大
藤田保健衛生大坂文種報徳會
藤田保健衛生大
徳島大
奈良県立医大
日本医大
日本医大多摩永山
日本大
日本大板橋
浜松医大
富山医薬大
福井医大
福岡大
福島県立医大
兵庫医大
防衛医大
北海道大
北里大
名古屋大
琉球大
和歌山県立医大
獨協医大越谷
獨協医大

頭頸科または耳鼻咽喉科

愛知がんセンター
九州がんセンター
群馬がんセンター
群馬がんセンター東毛病院
国立がんセンター

埼玉がんセンター
四国がんセンター
新潟がんセンター
新潟がんセンター新潟病院
神奈川がんセンター

千葉がんセンター
大阪成人病センター
癌研究会附属

歯科口腔外科

愛知医大
愛知学院大歯学部第1
旭川医大
横浜市立大
岡山大歯学部第1
岡山大歯学部第2
岩手医大歯学部第1
岐阜大
紀南総合病院
久留米大
宮崎医大
京都大
金沢大
九州歯大第1
九州歯大第2
九州大歯学部第1
九州大歯学部第2
群馬大
慶応大
広島大歯学部第1
広島大歯学部第2
弘前大
香川医大
高知医大
佐賀医大
札幌医大

三重大
山形大
山口大
産業医大
滋賀医大
鹿児島大歯学部第1
昭和大歯学部第1
昭和大歯学部第2
信州大
新潟大歯学部第1
新潟大歯学部第2
神奈川歯大
川崎医大
大阪医大
大阪歯大第1
大阪歯大第2
大阪大歯学部第2
大分医大
筑波大
朝日大歯学部
長崎大歯学部第1
長崎大歯学部第2
鳥取大
鶴見大歯学部第1
鶴見大歯学部第2
島根医大

東海大
東京医科歯科大歯学部第1
東京医科歯科大歯学部第2
東京医大
東京歯大第1
東京女子医大
東日本学園大歯学部第1
東北大歯学部第2
徳島大歯学部第1
徳島大歯学部第2
奈良県立医大
日本歯大新潟歯学部第2
日本大松戸歯学部頭頸
浜松医大
富山医薬大
福井医大
福岡歯大第1
福岡歯大第2
兵庫医大
北海道大歯学部第1
北海道大歯学部第2
名古屋大
明海大歯学部第2
和歌山県立医大
獨協医大

外科

愛知医大第1
愛媛大第2
岡山大第2
岩手医大第1
金沢医大第2
金沢大第2
群馬大第1
群馬大第2

広島大第2
弘前大第2
慈恵医大第1
自治医大一般
信州大第2
川崎医大川崎病院
大阪市大第1
長崎大第1

鳥取大第2
帝京大第1
東京医科歯科大第2
徳島大第1
徳島大第2
福井医大第2
名古屋大第2

Carcinoma of the Parotid Glands

1683 cases from 1965 to 1997

Table 1 Sex and Stage

	Male	Female	Total
I	178	201	379
II	266	208	474
III	225	147	372
IV	338	120	458
Total	1007	676	1683

Table 2 T and N Status

	N0	N1	N2a	N2b	N2c	N3	Total
T1a	99	2	0	5	0	0	106
T1b	61	6	2	6	0	0	75
T2a	281	9	0	10	2	0	302
T2b	313	29	4	65	0	1	412
T3a	112	4	4	12	0	0	132
T3b	269	45	4	62	2	2	384
T4a	27	1	0	1	2	0	31
T4b	134	31	3	62	6	5	241
Total	1296	127	17	223	12	8	1683

Table 3 Distribution of Histological Types According to Age

	0-	10-	20-	30-	40-	50-	60-	70-	80-	90-	Total
Mucoepidermoid carcinoma	4	37	33	39	64	67	69	41	12	2	368
Acinic cell carcinoma	2	9	5	11	16	21	16	13	1	0	94
Adenocarcinoma	1	9	18	27	55	104	120	72	13	0	419
Epidermoid carcinoma	1	1	6	2	19	42	64	43	27	0	205
Adenoid cystic carcinoma	0	6	27	33	59	55	59	35	10	0	284
Mixed tumor,malignant	1	0	12	21	37	36	45	30	11	0	193
Carcinoma,undifferentiated type	0	1	1	5	18	17	19	15	4	1	81
Carcinoma	0	2	2	2	7	12	5	6	3	0	39
Total	9	65	104	140	275	354	397	255	81	3	1683

Table 4 Distribution of Histological Types According to Sex

	Male	Female	Total
Mucoepidermoid carcinoma	209	159	368
Acinic cell carcinoma	35	59	94
Adenocarcinoma	291	128	419
Epidermoid carcinoma	160	45	205
Adenoid cystic carcinoma	123	161	284
Mixed tumor,malignant	112	81	193
Carcinoma,undifferentiated type	50	31	81
Carcinoma	27	12	39
Total	1007	676	1683

Table 5 Distribution of Histological Types According to T Status

	T1a	T1b	T2a	T2b	T3a	T3b	T4a	T4b	Total
Mucoepidermoid carcinoma	40	23	72	103	14	83	2	31	368
Acinic cell carcinoma	3	8	30	15	13	15	2	8	94
Adenocarcinoma	21	18	63	124	26	101	3	63	419
Epidermoid carcinoma	3	2	22	45	17	62	5	49	205
Adenoid cystic carcinoma	23	12	60	68	26	60	9	26	284
Mixed tumor,malignant	13	10	37	29	29	34	7	34	193
Carcinoma,undifferentiated type	1	2	11	20	4	20	0	23	81
Carcinoma	2	0	7	8	3	9	3	7	39
Total	106	75	302	412	132	384	31	241	1683

Table 6 Distribution of Histological Types According to N Status

	N0	N1	N2a	N2b	N2c	N3	Total
Mucoepidermoid carcinoma	305	19	3	37	1	3	368
Acinic cell carcinoma	85	1	0	8	0	0	94
Adenocarcinoma	276	48	4	84	6	1	419
Epidermoid carcinoma	145	14	4	42	0	0	205
Adenoid cystic carcinoma	262	9	3	8	1	1	284
Mixed tumor,malignant	156	15	2	18	1	1	193
Carcinoma,undifferentiated type	42	16	0	19	2	2	81
Carcinoma	25	5	1	7	1	0	39
Total	1296	127	17	223	12	8	1683

Table 7 Distribution of Histological Types According to M Status

	M(-)	M(+)	Total
Mucoepidermoid carcinoma	363	5	368
Acinic cell carcinoma	91	3	94
Adenocarcinoma	392	27	419
Epidermoid carcinoma	190	15	205
Adenoid cystic carcinoma	275	9	284
Mixed tumor,malignant	187	6	193
Carcinoma,undifferentiated type	74	7	81
Carcinoma	38	1	39
Total	1610	73	1683

Table 8 Distribution of Histological Types According to FNP

	FNP(+)	FNP(-)	Total
Mucoepidermoid carcinoma	282	86	368
Acinic cell carcinoma	79	15	94
Adenocarcinoma	268	151	419
Epidermoid carcinoma	124	81	205
Adenoid cystic carcinoma	214	70	284
Mixed tumor,malignant	144	49	193
Carcinoma,undifferentiated type	52	29	81
Carcinoma	28	11	39
Total	1191	492	1683

Carcinoma of the Submandibular Glands

445 cases from 1965 to 1997

Table 9 Sex and Stage

	Male	Female	Total
I	43	54	97
II	47	45	92
III	49	37	86
IV	116	54	170
Total	255	190	445

Table 10 T and N Status

	N0	N1	N2a	N2b	N2c	N3	Total
T1a	27	3	2	3	0	0	35
T1b	10	0	0	3	0	1	14
T2a	73	14	1	13	5	0	106
T2b	45	22	1	18	0	1	87
T3a	38	1	1	6	2	0	48
T3b	39	8	3	24	3	1	78
T4a	9	0	2	2	0	0	13
T4b	28	10	1	15	6	4	64
Total	269	58	11	84	16	7	445

Table 11 Distribution of Histological Types According to Age

	0-	10-	20-	30-	40-	50-	60-	70-	80-	90-	Total
Mucoepidermoid carcinoma	1	1	0	5	8	21	18	14	3	0	71
Acinic cell carcinoma	0	0	1	1	0	3	3	1	0	0	9
Adenocarcinoma	0	0	3	1	9	13	29	27	3	0	85
Epidermoid carcinoma	0	0	0	0	5	14	12	10	1	0	42
Adenoid cystic carcinoma	0	0	11	15	33	48	37	19	3	0	166
Mixed tumor,malignant	0	1	2	5	7	5	7	7	2	0	36
Carcinoma,undifferentiated type	0	0	0	3	0	5	8	7	1	0	24
Carcinoma	0	0	0	0	4	2	3	2	1	0	12
Total	1	2	17	30	66	111	117	87	14	0	445

Table 12 Distribution of Histological Types According to Sex

	Male	Female	Total
Mucoepidermoid carcinoma	40	31	71
Acinic cell carcinoma	5	4	9
Adenocarcinoma	67	18	85
Epidermoid carcinoma	28	14	42
Adenoid cystic carcinoma	72	94	166
Mixed tumor,malignant	18	18	36
Carcinoma,undifferentiated type	17	7	24
Carcinoma	8	4	12
Total	255	190	445

Table 13 Distribution of Histological Types According to T Status

	T1a	T1b	T2a	T2b	T3a	T3b	T4a	T4b	Total
Mucoepidermoid carcinoma	9	4	14	12	5	15	3	9	71
Acinic cell carcinoma	2	0	4	2	0	0	0	1	9
Adenocarcinoma	7	3	21	13	8	17	2	14	85
Epidermoid carcinoma	0	1	7	9	5	13	1	6	42
Adenoid cystic carcinoma	12	5	49	41	14	24	5	16	166
Mixed tumor,malignant	3	0	7	4	10	2	0	10	36
Carcinoma,undifferentiated type	1	1	2	4	5	3	2	6	24
Carcinoma	1	0	2	2	1	4	0	2	12
Total	35	14	106	87	48	78	13	64	445

Table 14 Distribution of Histological Types According to N Status

	N0	N1	N2a	N2b	N2c	N3	Total
Mucoepidermoid carcinoma	43	10	1	13	3	1	71
Acinic cell carcinoma	6	2	0	1	0	0	9
Adenocarcinoma	37	10	4	26	5	3	85
Epidermoid carcinoma	17	9	1	12	3	0	42
Adenoid cystic carcinoma	127	17	4	14	2	2	166
Mixed tumor,malignant	24	3	0	8	0	1	36
Carcinoma,undifferentiated type	10	6	1	5	2	0	24
Carcinoma	5	1	0	5	1	0	12
Total	269	58	11	84	16	7	445

Table 15 Distribution of Histological Types According to M Status

	M(-)	M(+)	Total
Mucoepidermoid carcinoma	68	3	71
Acinic cell carcinoma	9	0	9
Adenocarcinoma	74	11	85
Epidermoid carcinoma	37	5	42
Adenoid cystic carcinoma	151	15	166
Mixed tumor,malignant	29	7	36
Carcinoma,undifferentiated type	22	2	24
Carcinoma	10	2	12
Total	400	45	445

Carcinoma of the Sublingual Gland

106 cases from 1965 to 1997

Table 16 Sex and Stage

	Male	Female	Total
I	6	22	28
II	18	19	36
III	14	3	17
IV	14	10	24
Total	52	54	106

Table 17 T and N Status

	N0	N1	N2a	N2b	N2c	N3	Total
T1a	12	1	0	0	0	0	13
T1b	8	0	0	0	0	0	8
T2a	18	0	0	5	1	0	24
T2b	23	3	0	6	1	0	33
T3a	7	0	0	1	0	0	8
T3b	9	3	1	1	1	0	15
T4a	1	0	0	0	0	0	1
T4b	3	0	0	0	1	0	4
Total	81	7	1	13	4	0	106

Table 18 Distribution of Histological Types According to Age

	0-	10-	20-	30-	40-	50-	60-	70-	80-	90-	Total
Mucoepidermoid carcinoma	0	0	0	1	3	5	9	4	1	0	23
Acinic cell carcinoma	0	0	0	0	1	0	0	0	0	0	1
Adenocarcinoma	0	0	0	0	0	6	0	0	2	0	8
Epidermoid carcinoma	0	0	0	0	1	0	0	1	0	0	2
Adenoid cystic carcinoma	0	0	0	3	14	14	19	15	2	0	67
Mixed tumor,malignant	0	0	0	1	0	1	0	0	0	0	2
Carcinoma,undifferentiated type	0	0	1	0	0	0	0	1	0	0	2
Carcinoma	0	0	0	0	0	0	0	1	0	0	1
Total	0	0	1	5	19	26	28	22	5	0	106

Table 19 Distribution of Histological Types According to Sex

	Male	Female	Total
Mucoepidermoid carcinoma	10	13	23
Acinic cell carcinoma	1	0	1
Adenocarcinoma	4	0	8
Epidermoid carcinoma	1	1	2
Adenoid cystic carcinoma	31	36	67
Mixed tumor,malignant	2	0	2
Carcinoma,undifferentiated type	2	0	2
Carcinoma	1	0	1
Total	52	54	106

Table 20 Distribution of Histological Types According to T Status

	T1a	T1b	T2a	T2b	T3a	T3b	T4a	T4b	Total
Mucoepidermoid carcinoma	4	2	2	9	0	5	0	1	23
Acinic cell carcinoma	0	0	0	0	0	0	0	0	1
Adenocarcinoma	0	2	3	2	0	1	0	0	8
Epidermoid carcinoma	0	0	1	1	0	0	0	0	2
Adenoid cystic carcinoma	9	4	16	18	7	9	1	3	67
Mixed tumor,malignant	0	0	0	2	0	0	0	0	2
Carcinoma,undifferentiated type	0	0	2	0	0	0	0	0	2
Carcinoma	0	0	0	1	0	0	0	0	1
Total	13	8	24	33	8	15	1	4	106

Table 21 Distribution of Histological Types According to N Status

	N0	N1	N2a	N2b	N2c	N3	Total
Mucoepidermoid carcinoma	17	4	0	2	0	0	23
Acinic cell carcinoma	1	0	0	0	0	0	1
Adenocarcinoma	6	0	0	2	0	0	8
Epidermoid carcinoma	0	0	0	0	2	0	2
Adenoid cystic carcinoma	55	3	1	6	2	0	67
Mixed tumor,malignant	1	0	0	1	0	0	2
Carcinoma,undifferentiated type	0	0	0	2	0	0	2
Carcinoma	1	0	0	0	0	0	1
Total	81	7	1	13	4	0	106

Table 22 Distribution of Histological Types According to M Status

	M(-)	M(+)	Total
Mucoepidermoid carcinoma	23	0	23
Acinic cell carcinoma	1	0	1
Adenocarcinoma	8	0	8
Epidermoid carcinoma	2	0	2
Adenoid cystic carcinoma	63	4	67
Mixed tumor,malignant	2	0	2
Carcinoma,undifferentiated type	2	0	2
Carcinoma	1	0	1
Total	102	4	106

Carcinoma of the Minor Salivary Glands

277cases

Table 23 Sex and Stage

Stage	Male	Female	Total
I	40	76	116
II	41	52	93
III	10	16	26
IV	22	20	42
	113	164	277

Table 24 Location

Lippe	5
Oral Cavity	222
Oropharynx	25
Nasopharynx	1
Maxillary Sinus	14
Submaxilla bone	10
Total	227

Table 25 T and N Statu

	N0	N1	N2a	N2b	N2c	N3	Total
T1a	68	1		2			71
T1b	32						32
T2a	52	1		1			54
T2b	53	1		2	1	1	58
T3a	10	2					12
T3b	16	4	1	1			22
T4a	2						2
T4b	14	6		4	2		26
Total	245	15	1	10	3	1	277

Table 26 Location and Stage

	I	II	III	IV
Lippe	3	1		1
Buccal mucosa	27	22	4	6
Upper alveous and gingiva	1	2	1	3
Lower alveous and gingiva		4		1
Hard plate	48	38	12	8
Tongue	5	4		
Floor of mouth	12	6	7	10

Table 27 Distribution of Histologic types According to Age

	20~	30~	40~	50~	60~	70~	80~	90~	Total
Mucoepidermoid carcinoma	3	5	13	18	32	26	18	2	117
Acinic cell carcinoma		1	1	1	1	1	3	1	9
Adenocarcinoma	1		2	7	9	4	7	2	32
Epidermoid carcinoma									0
Adenoid cystic carcinoma		1	6	15	22	29	12	9	94
Mixed tumor,malignant			1	2	2	3	3	2	13
Carcinoma, undifferentiated type						1	3		4
Carcinoma			1		2	3	2		8
	4	7	24	43	68	67	48	16	277

Table 28 Distribution of Histologic types According to Sex

	male	female	Total
Mucoepidermoid carcinoma	49	68	117
Acinic cell carcinoma	5	4	9
Adenocarcinoma	14	18	32
Epidermoid carcinoma	0	0	0
Adenoid cystic carcinoma	36	58	94
Mixed tumor,malignant	3	10	13
Carcinoma, undifferentiated type	1	3	4
Carcinoma	5	3	8
	113	164	277

Table 29 Distribution of Histologic types According to T Status

	T1a	T1b	T2a	T2b	T3a	T3b	T4a	T4b	Total
Mucoepidermoid carcinoma	38	20	22	23	5	6		3	117
Acinic cell carcinoma	3	1	1	2				2	9
Adenocarcinoma	7	3	6	10		3		3	32
Epidermoid carcinoma									0
Adenoid cystic carcinoma	19	5	18	19	6	12	1	14	94
Mixed tumor,malignant	3	3	3	1	1		1	1	13
Carcinoma, undifferentiated type			2	1				1	4
Carcinoma	1		2	2		1		2	8
	71	32	54	58	12	22	2	26	277

Table 30 Distribution of Histologic types According to N Status

	N0	N1	N2a	N2b	N2c	N3	Total
Mucoepidermoid carcinoma	107	3	1	3	2	1	117
Acinic cell carcinoma	8	1					9
Adenocarcinoma	26	3		3			32
Epidermoid carcinoma							0
Adenoid cystic carcinoma	85	7		2			94
Mixed tumor,malignant	13						13
Carcinoma, undifferentiated type	2	1		1			4
Carcinoma	6			1	1		8
	247	15	1	10	3	1	277

Table 31 Distribution of Histologic types According to M Status

	M0	M1	Total
Mucoepidermoid carcinoma	115	2	117
Acinic cell carcinoma	9		9
Adenocarcinoma	32		32
Epidermoid carcinoma			0
Adenoid cystic carcinoma	86	8	94
Mixed tumor,malignant	13		13
Carcinoma, undifferentiated type	4		4
Carcinoma	8		8
	267	10	277

Carcinoma of the Parotid Gland

TNM Classification 1997

Table 1-a Sex and Stage

	Male	Female	Total
I	177	201	378
II	286	236	522
III	6	3	9
IV	538	236	774
Total	1007	676	1683

Table 2-a T and N Status

	N0	N1	N2a	N2b	N2c	N3	Total
T1	99	2	0	5	0	0	106
T2	280	9	0	10	2	0	301
T3	522	43	7	63	1	3	639
T4	395	73	10	145	9	5	637
Total	1296	127	17	223	12	8	1683

Table 5-a Distribution of Histological Types According to T Status

	T1	T2	T3	T4	Total
Mucoepidermoid carcinoma	40	72	152	104	368
Acinic cell carcinoma	3	30	40	21	94
Adenocarcinoma	21	62	156	180	419
Epidermoid carcinoma	3	22	70	110	205
Adenoid cystic carcinoma	23	60	109	92	284
Mixed tumor,malignant	13	37	69	74	193
Carcinoma,undifferentiated type	1	11	30	39	81
Carcinoma	2	7	13	17	39
Total	106	301	639	637	1683

Carcinoma of the Submandibular Gland

TNM Classification 1997

Table 9-a Sex and Stage

	Male	Female	Total
I	42	54	96
II	63	58	121
III	9	8	17
IV	141	70	211
Total	255	190	445

Table 10-a T and N Status

	N0	N1	N2a	N2b	N2c	N3	Total
T1	27	3	2	3	0	0	35
T2	73	14	1	13	5	0	106
T3	130	31	5	51	5	3	225
T4	39	10	3	17	6	4	79
Total	269	58	11	84	16	7	445

Table 13-a Distribution of Histological Types According to T Status

	T1	T2	T3	T4	Total
Mucoepidermoid carcinoma	9	14	35	13	71
Acinic cell carcinoma	2	4	2	1	9
Adenocarcinoma	7	21	41	16	85
Epidermoid carcinoma	0	7	28	7	42
Adenoid cystic carcinoma	12	49	83	22	166
Mixed tumor,malignant	3	7	16	10	36
Carcinoma,undifferentiated type	1	2	13	8	24
Carcinoma	1	2	7	2	12
Total	35	106	225	79	445

Carcinoma of the Sublingual Gland

TNM Classification 1997

Table 16-a Sex and Stage

	Male	Female	Total
I	6	22	28
II	24	22	46
III	2	0	2
IV	20	10	30
Total	52	54	106

Table 17-a T and N Status

	N0	N1	N2a	N2b	N2c	N3	Total
T1	12	1	0	0	0	0	13
T2	18	0	0	5	1	0	24
T3	47	6	1	8	2	0	64
T4	4	0	0	0	1	0	5
Total	81	7	1	13	4	0	106

Table 20-a Distribution of Histological Types According to T Status

	T1	T2	T3	T4	Total
Mucoepidermoid carcinoma	4	2	16	1	23
Acinic cell carcinoma	0	0	1	0	1
Adenocarcinoma	0	3	5	0	8
Epidermoid carcinoma	0	1	1	0	2
Adenoid cystic carcinoma	9	16	38	4	67
Mixed tumor,malignant	0	0	2	0	2
Carcinoma,undifferentiated type	0	2	0	0	2
Carcinoma	0	0	1	0	1
Total	13	24	64	5	106

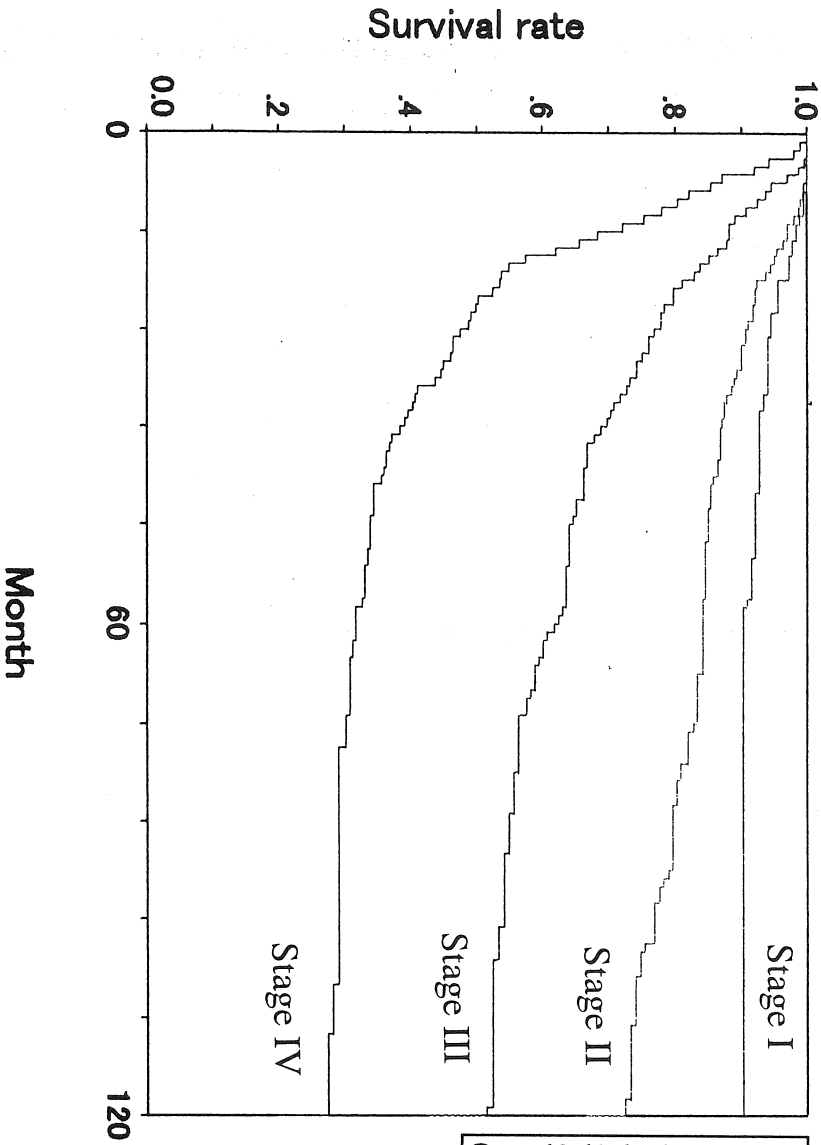
Carcinoma of the Minor Salivary Glands

TNM Classification 1997 Lip and Oral Cavity

Table 26-a Location and Stage

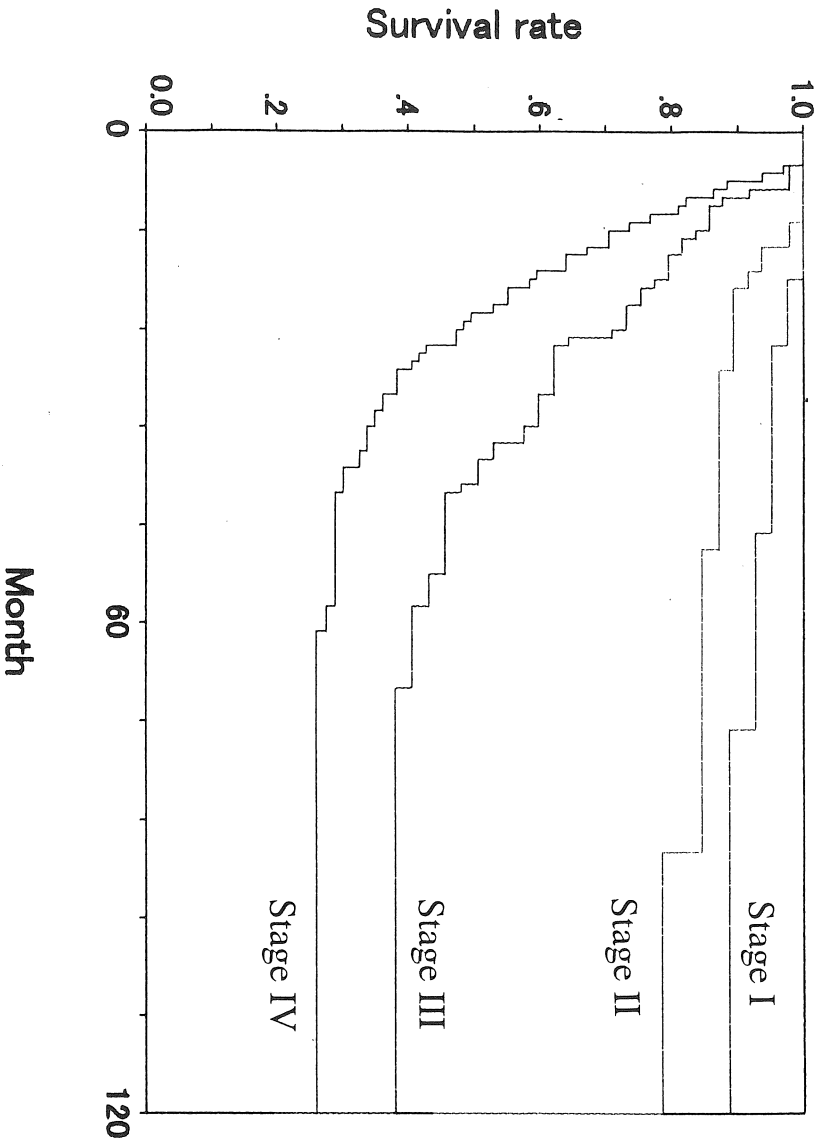
	I	II	III	IV
Lippe	3			2
Buccal mucoşa	19	8	3	29
Upper alveous and gingiva		1		6
Lower alveous and gingiva				5
Hard plate	30	18	4	54
Tongue	3	2		4
Floor of mouth	1	11		23

Parotid Gland



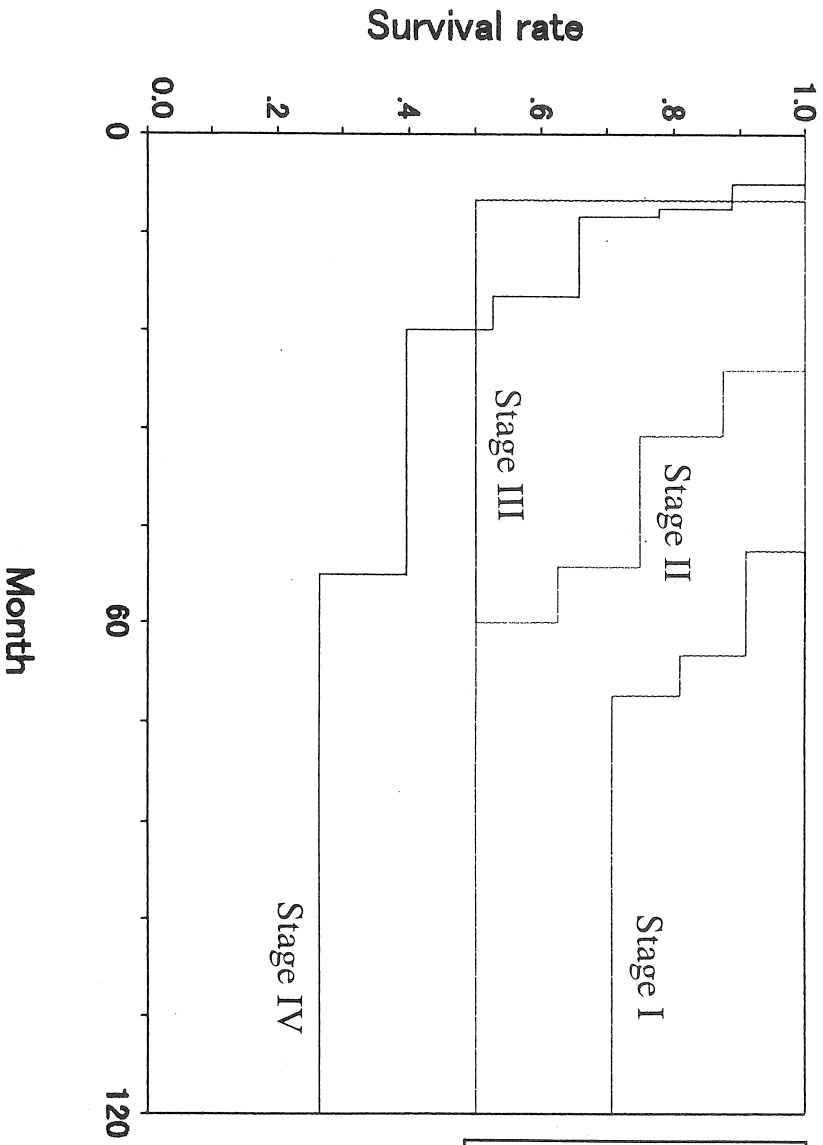
	Total	Number event	Number censored
Stage I	192	17	175
Stage II	318	69	249
Stage III	248	103	145
Stage IV	316	205	111
Overall	1074	394	680

Submandibular Gland



	Total	Number event	Number censored
Stage I	42	4	38
Stage II	48	10	38
Stage III	50	29	21
Stage IV	98	68	30
Overall	238	111	127

Sublingual Gland



	Total	Number event	Number censored
Stage I	13	3	10
Stage II	9	4	5
Stage III	3	1	2
Stage IV	9	6	3
Overall	34	14	20

